

CBCGB Informational Meeting

April 18, 2021

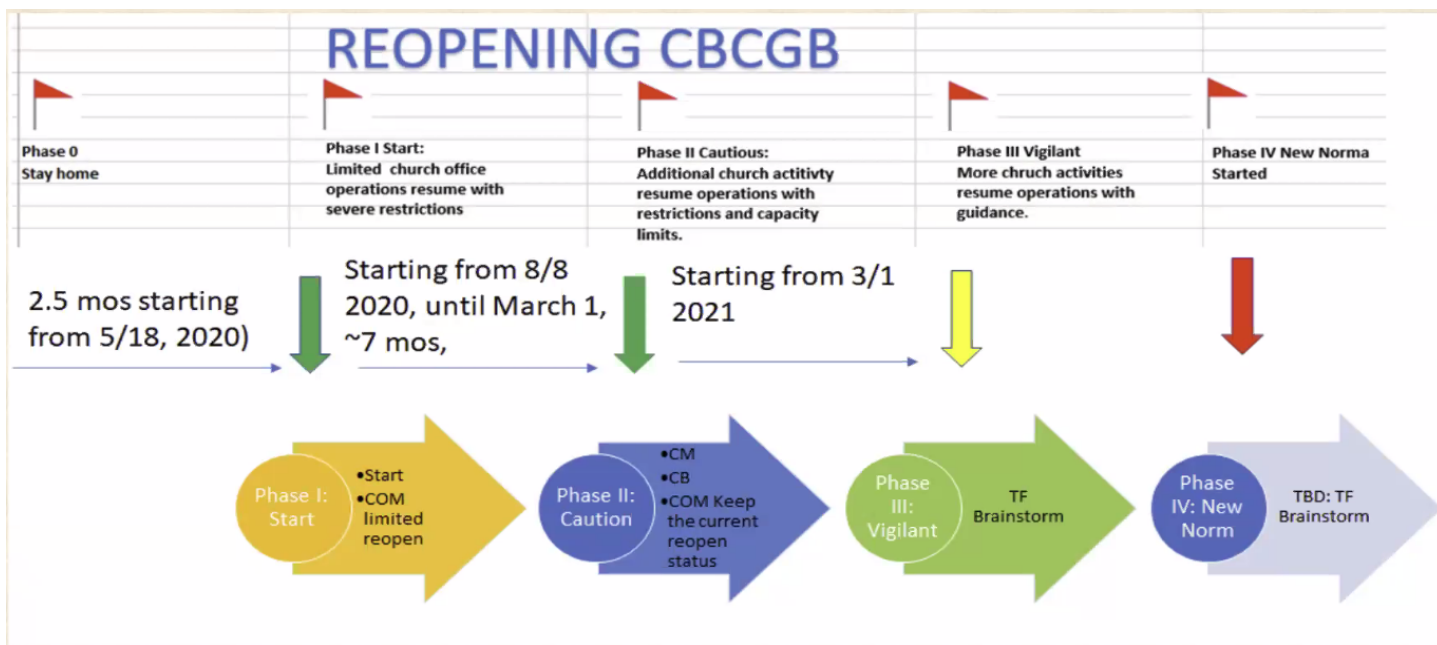
Location: Online Zoom Meeting

Meeting Agenda & Minutes

No.	Time 時間	Topic 議程	Lead 主領
1	3:00	Opening Remark 會議致詞	E. Paul 黃長老
2	3:02	Opening Prayer 會前禱告	E. Paul 黃長老
3	3:05	Exhortation 勉勵	P. Pan 潘牧師
4	3:25	BOE Update 長老團報告	E. Paul 黃長老
5	3:30	Status of Church Reopening 教會重啟	E. Ruike, BoD, and Pastoral Staff 王長老，執事會及教牧同工
6	3:50	Status of Church Expansion 教會擴建計劃	E. KC & BMWBC E. Li 朱長老及西郊教會長老
7	4:15	Question and Discussion 問題與討論	All 全體會眾
8	4:30	Closing Prayer	P. Pan 潘牧師

- Elder Paul opened in prayer at 3:02 PM.
- Exhortation: How CBE (Church Building Expansion) Relates to Ministry Development
 - Ministry for Younger Generation
 - Expansion of Community Service and Evangelism
 - Additional facilities for worship, spirituality, fellowship
- BOE Update
 - Send off of Chris, Emily, Zachary, Jeremy Cheng
 - Elder Chris stepped down from the BOE to serve as a ministry partner to Japan
 - Due to the pandemic and the closing of Japan's border, they have been waiting to enter the country
 - **Please pray and support them in this time of transition**
 - Farewell to Elder Jian
 - Moved to Florida for personal reasons and has stepped down from the BOE
 - **Please pray that he and their family will be able to find a new spiritual home in Florida**
 - Currently, we only have six members on the BOE

- BOE is actively seeking candidates from CM and CB
 - Status of Church Reopening
 - Reopening Task Force Team
 - BOE
 - Pastoral Staff: Pastor Pan, Pastor Yuegang, Minister Jeff
 - BOD: Samuel Chang, Jason Lee
 - Medical Advisory Team: Josh Lin
 - Mission: Care for the spiritual, physical, and mental well-being of members, coworkers, and community, with the safety is paramount and compliance with federal, state, and local government guidelines



- Cross Bridge Reopening
 - First Limited In-Person Worship on 4/11
 - 25 Members (12 coworkers, 13 members/~7 units)
 - 2-Week Registration Period, Registration full after 1 week
 - Accounting for Online and In-Person
 - Q/R Code for individuals worshipping in-person
 - Safety Measures in place
 - Thermal imaging to check people's temperatures
 - Pews labelled to help with social distancing
 - Next Steps:
 - Next In-Person Worship Service -> 5/9
 - CB will continue to celebrate communion on the second Sunday
 - Frequency and Limit Changes
 - Dependent on the Reopening Taskforce
 - Fellowships and Small Groups
 - Continuing to meet online, but may meet in-person with the warmer weather approaching
- CM Worship Reopening
 - Started live-streaming from sanctuary once a month in March
 - 3/7, 4/18, 5/2, 6/6
 - Holy Communion is served during these times -> members are very excited

- In-person worship is still under careful research and observation
 - Please pray for guidance and wisdom on how to reopening safely
- Currently have 406 connections online
- City Outreach Ministry (COM) Reopening
 - Since September 2020, in-person worship once per month
 - 10 coworkers only
 - Since April 2021, in-person worship twice per month
 - 10 coworkers and 15 members
 - From June 2021, in-person worship every week
 - 10 coworkers and 15 members



- Sunday Worship Reopening Safety Procedure

波士頓郊區華人聖經教會
 Chinese Bible Church of Greater Boston

Sunday Worship Reopening Safety Procedure

主日崇拜重啟計劃安全措施

上網註冊
Online Registration

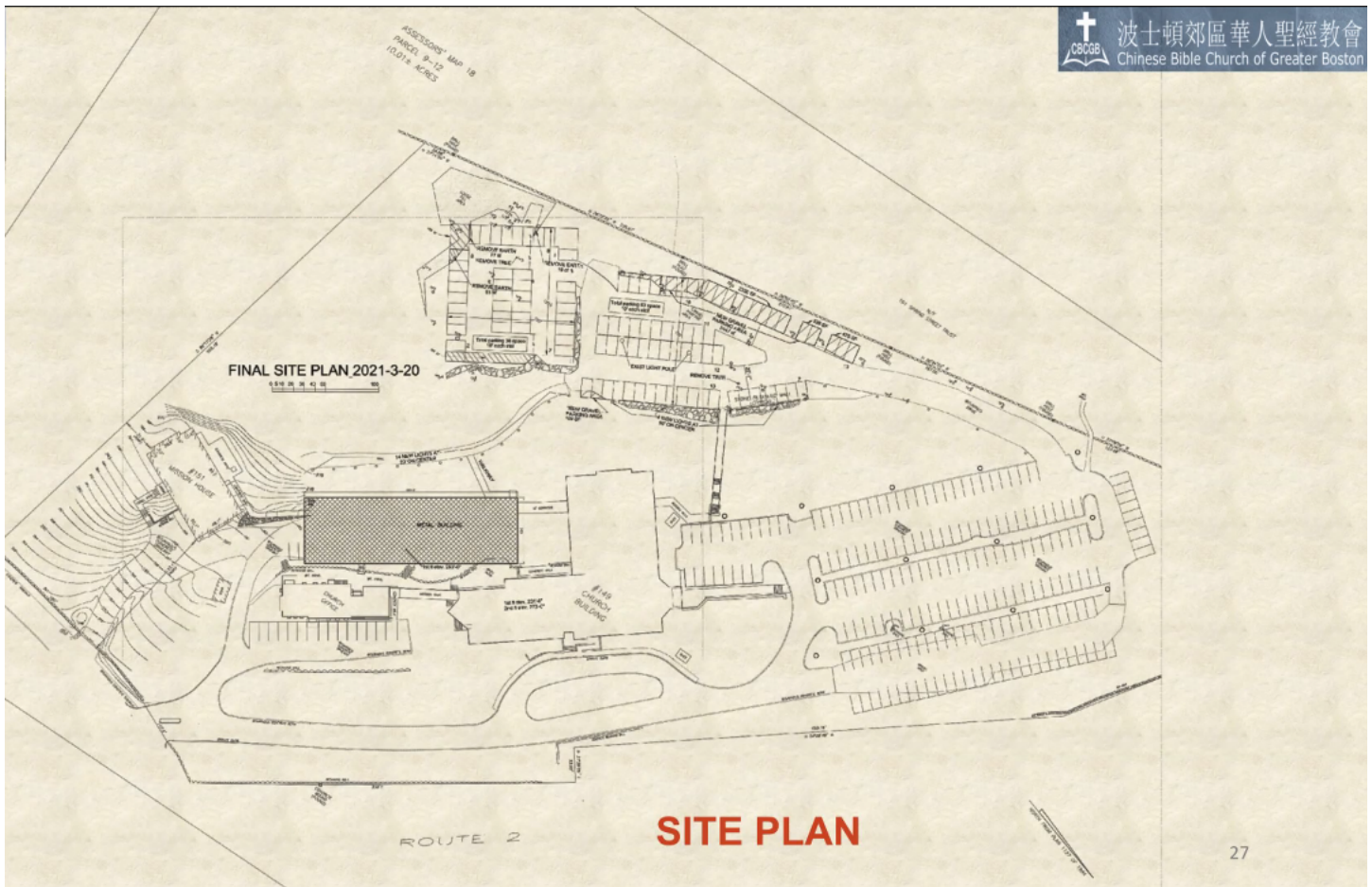
個人健康聲明
Attestation

報到 & 量體溫
Check-in & Temp Checks

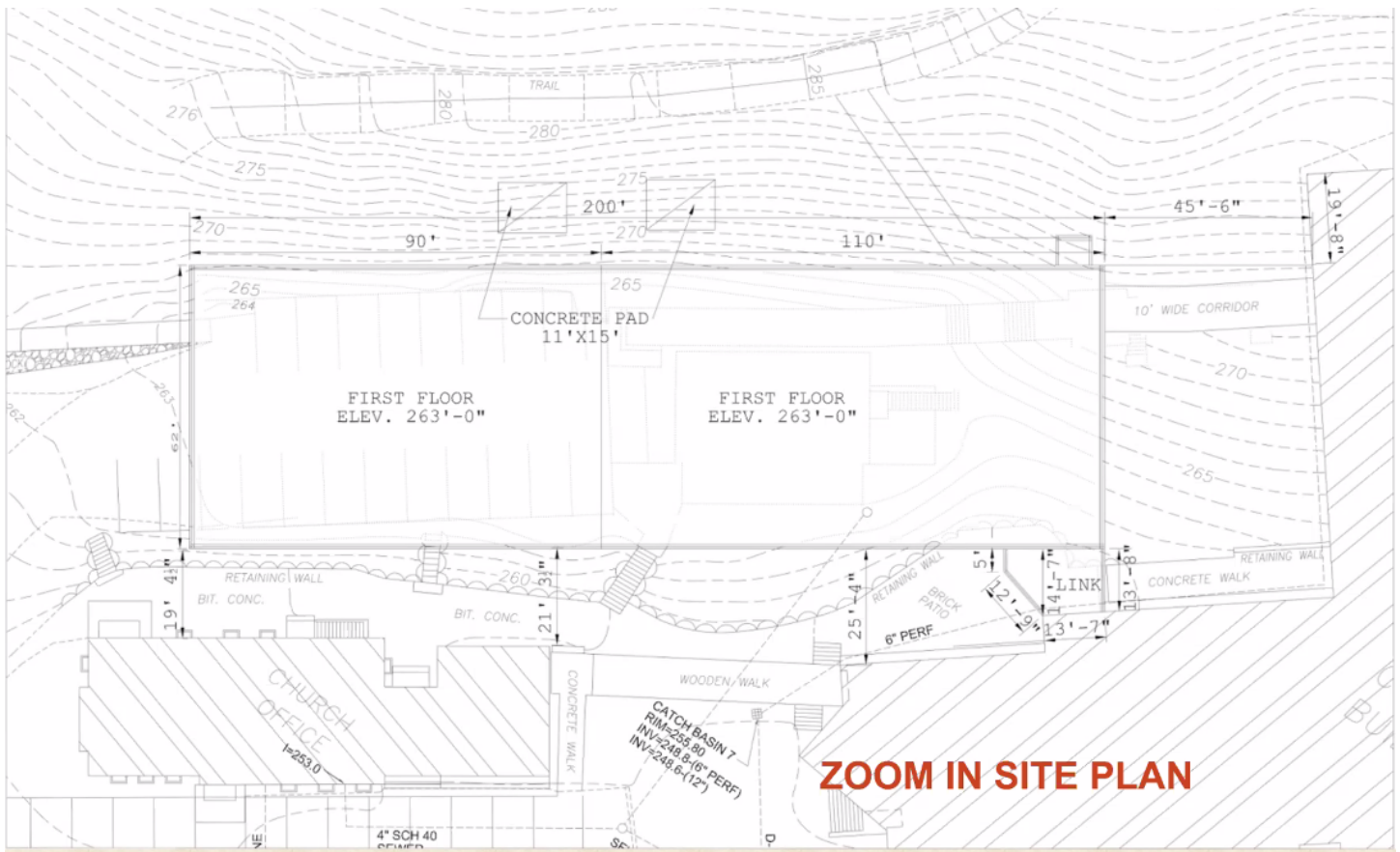
Registration Begins **Sunday Before Coming to Church** **Sunday at Church**

- Online Registration upwards to two weeks before through Eventbrite
- Fill out the Attestation form the Sunday morning before coming to church
 - This will enable contact tracing
- When you arrive, there will be a check-in and temperature check
- Status of Church Expansion
 - Vision: We want to enhance our community outreach and ensure the continuous growth of all ministries as a partial fulfillment of the Great Commission

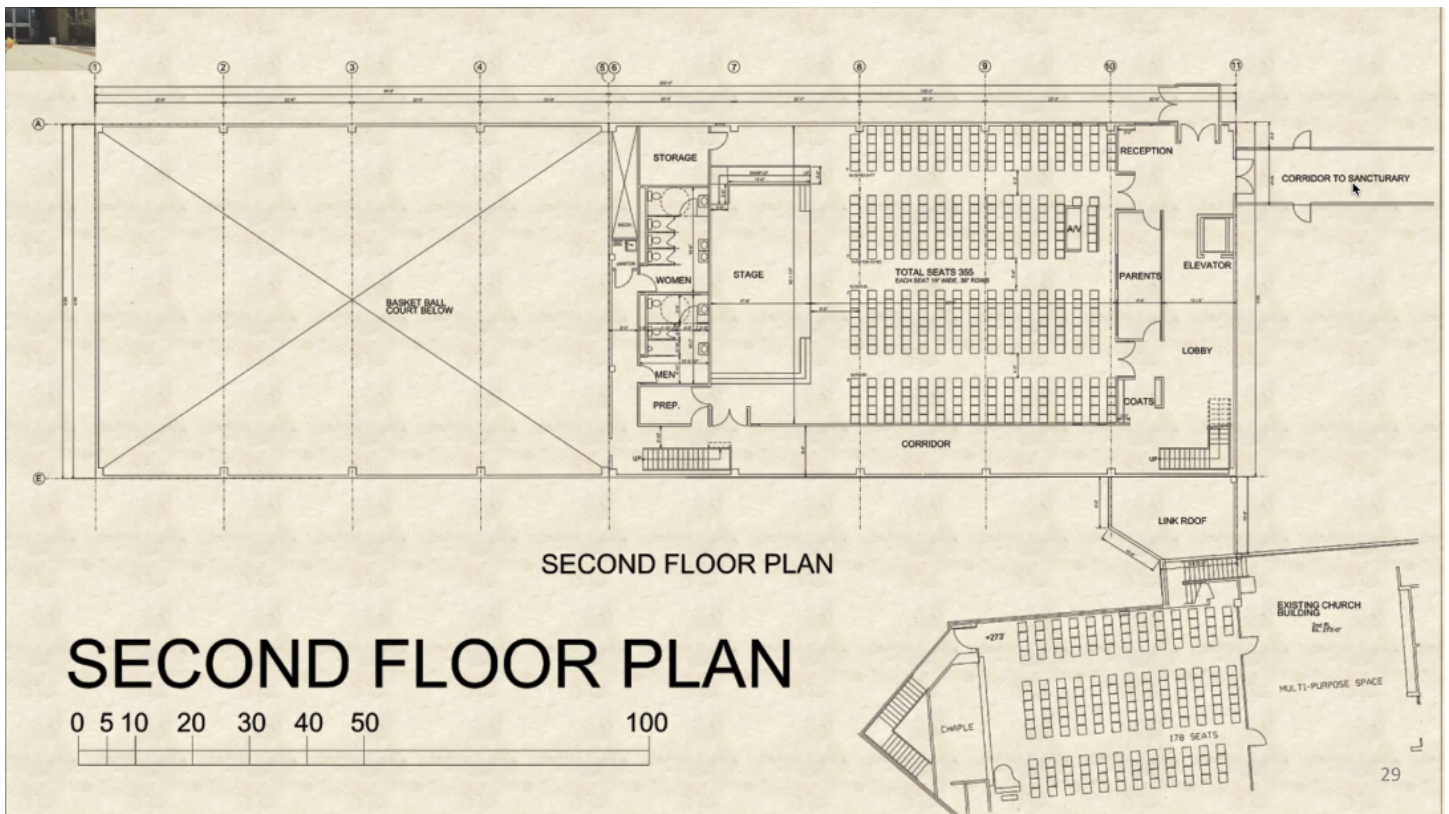
- Necessities of CBE
 - To provide a better means for community outreach
 - To increase space and flexibility for ministry usage and growth
 - To build up the church physically and spiritually
 - To optimize and maximize usage of the new building
 - Not only for our congregation but to also invite the community to utilize the space during the week
 - To be friendly and accessible to all demographics
- CBE will not impact other ministries financially!
- Major Components
 - 350+ seat new chapel
 - 14 rooms for Youth Ministry
 - 4 Offices and Conference Room
 - Gym - High School Basketball Court
 - Designed as a multi-purpose space
 - Can be used for badminton, table tennis, and other sports/activities
 - Handicap accessible (elevator)



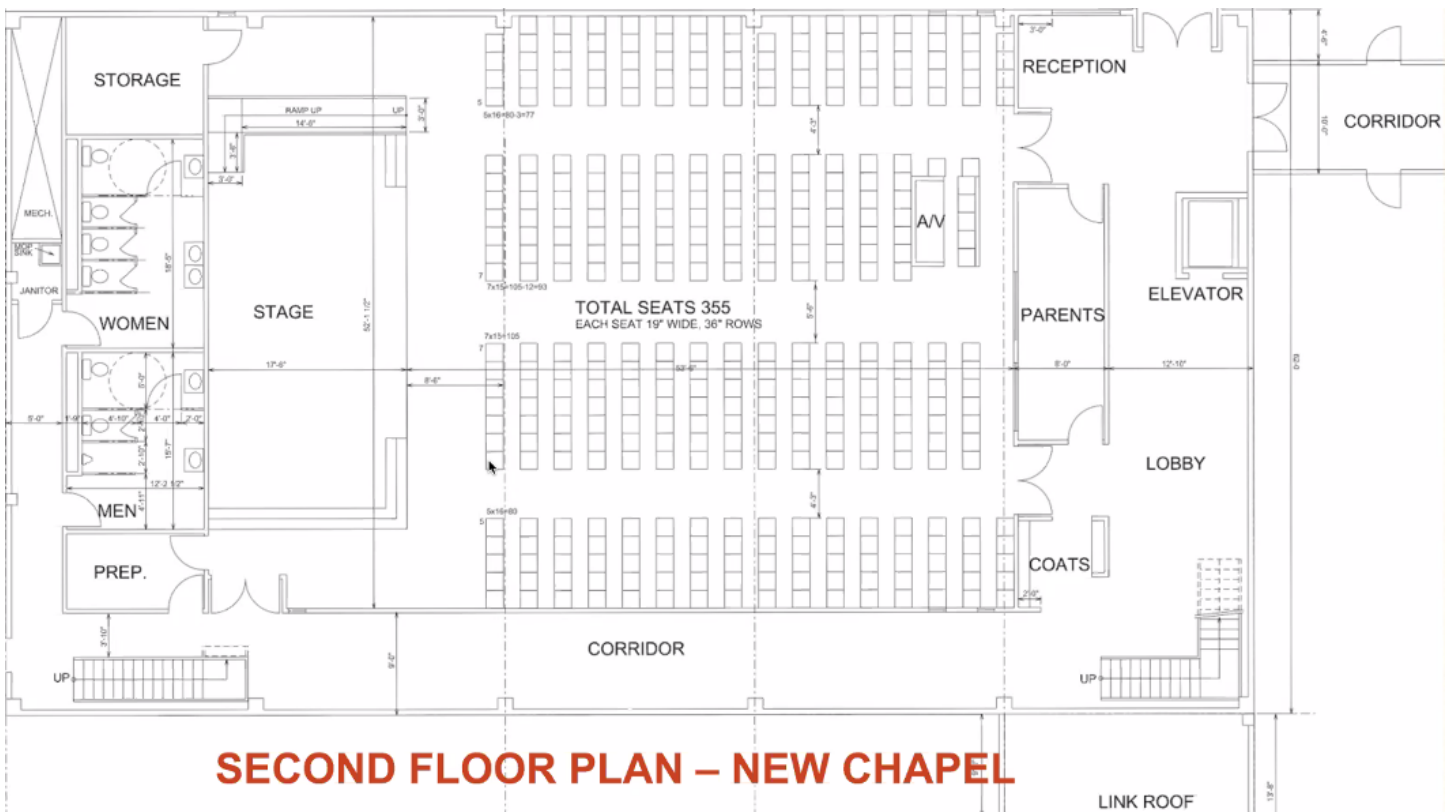
- New building is 200 ft x 62 ft
 - Left-side of the building will consist of the gym
 - Right-side of the building will consist of the chapel, classrooms, offices



- First Floor: gym, offices, classrooms
 - Glass cover corridor will connect the new building to the main church building
 - The upper parking lot will have an entrance taking people into this new building
 - Walkway will also include a walkway to the first-floor main church building, which is Children Sunday School
 - This door will be closed for the majority of the time to limit traffic into the children ministry area

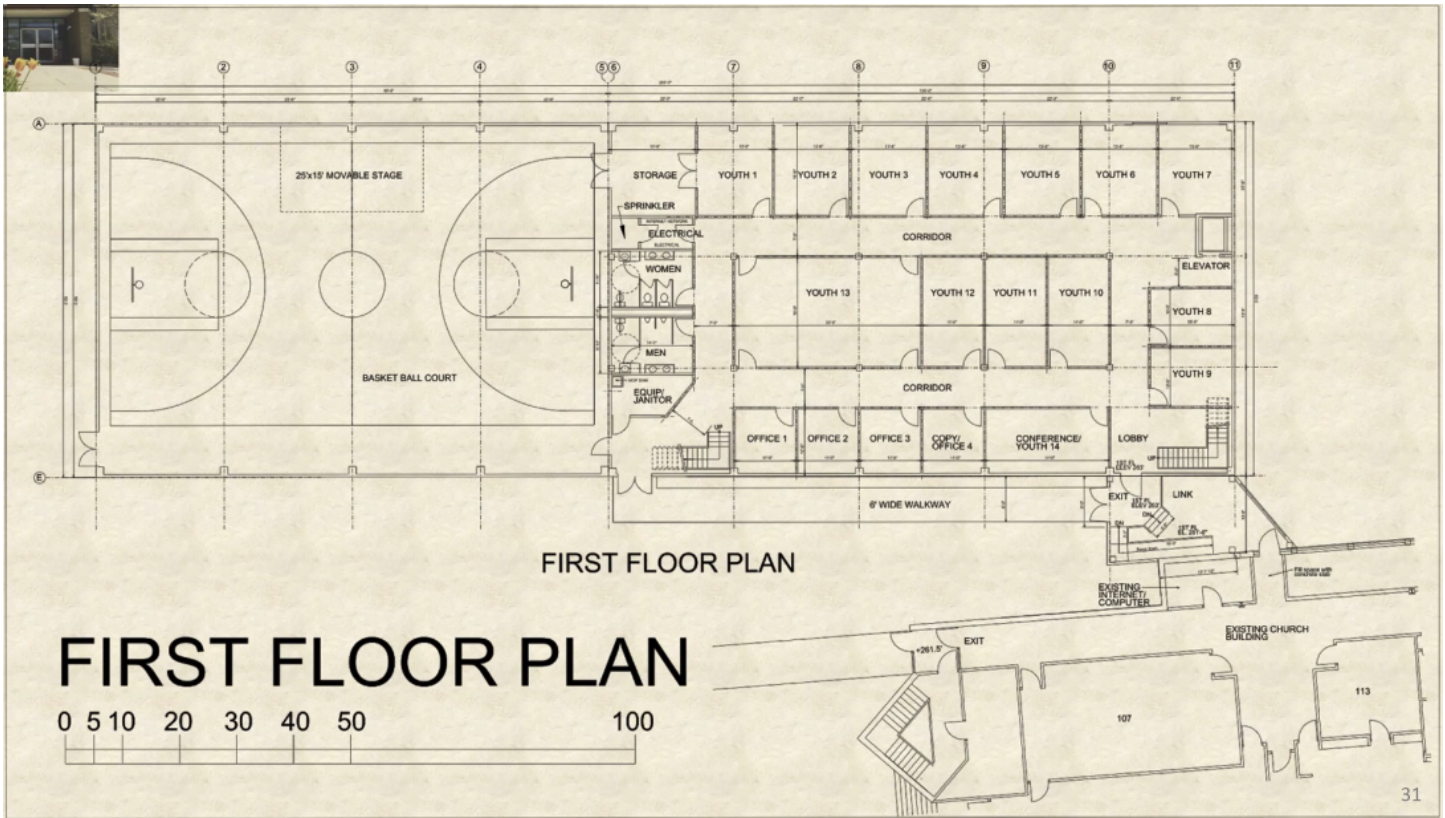


- Second Floor:
 - This is where the chapel will be located
 - Upper parking lot will directly take one to the second floor entrance on the upper-right

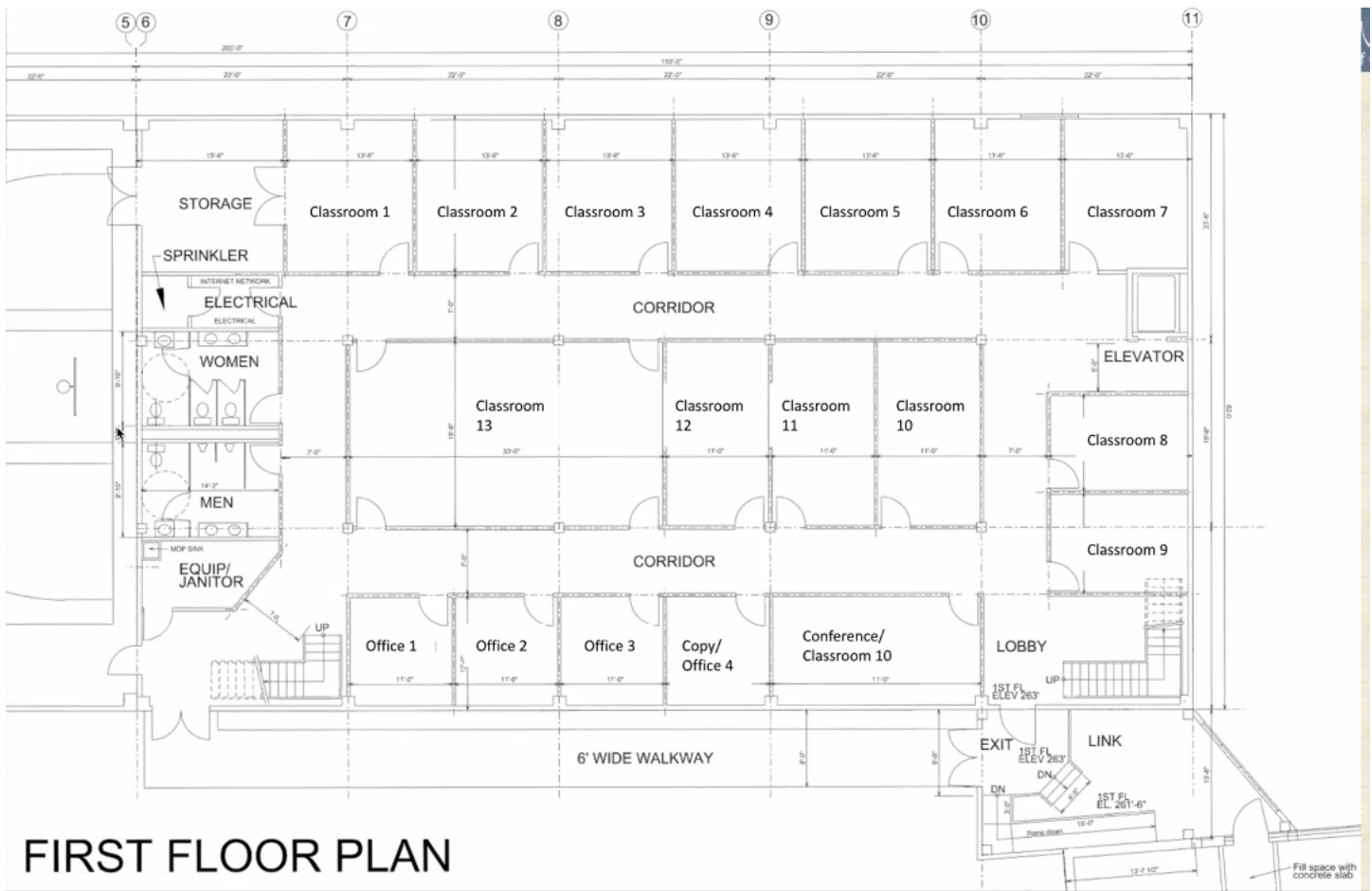


- New Chapel
 - Able to seat no more than 400 people max
 - Limited by the bathroom capacity (40 people max)

- Bathrooms are situated right behind the stage
 - Toilets will be facing on the gym side to reduce noise in the sanctuary
- Parents room included to allow parents to join the service while taking care of their young children
- Two rows of seating area to allow for A/V section to be inside the chapel to have better control of the sound
- Current “Coats” section is a flexible space
 - Could be used to serve coffee or a space to provide resources/material
- Corridor is fairly wide to accommodate fellowship time
- Roof-top garden possible depending on budget
- Prep room could be used for prayer before service

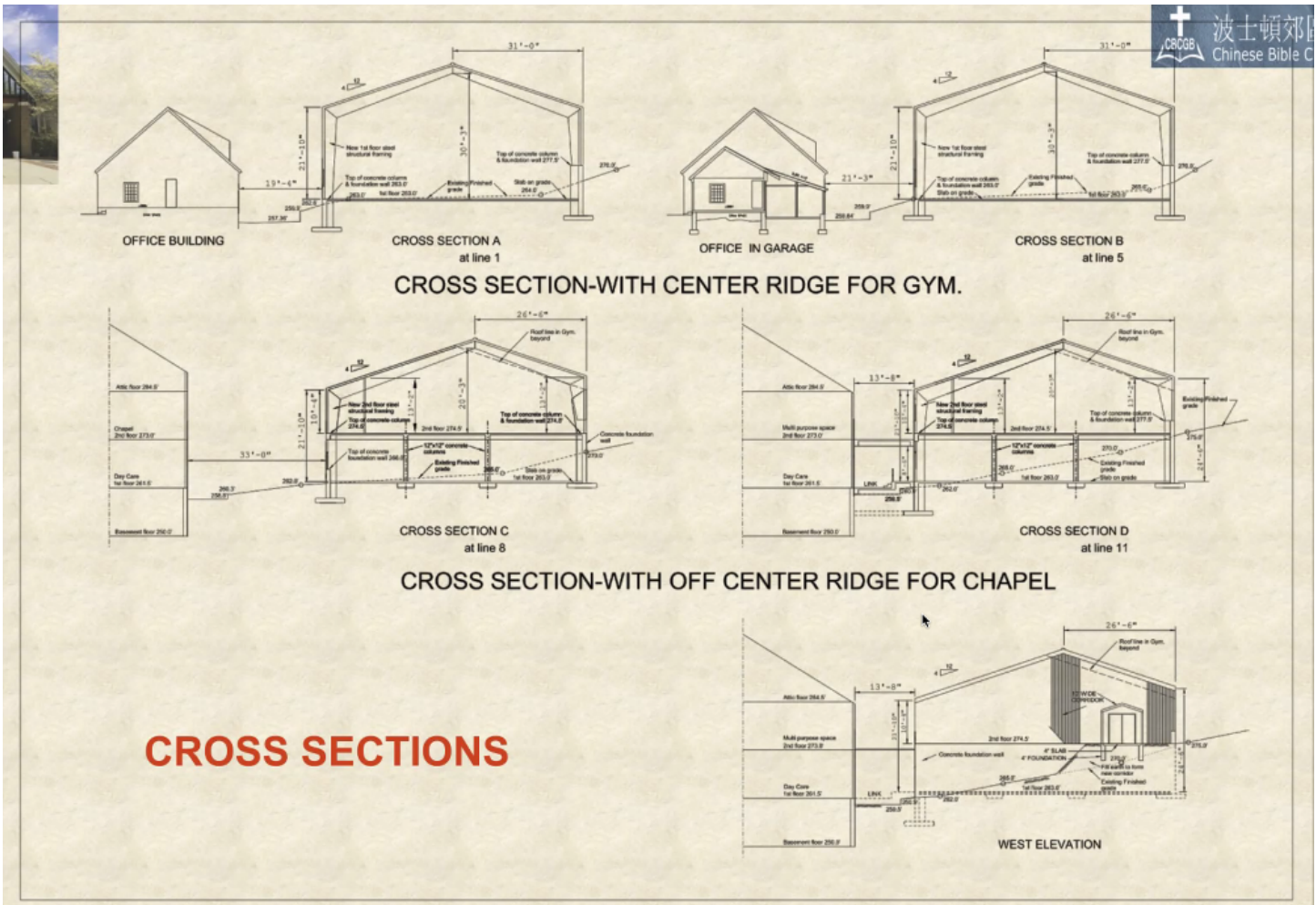


- First Floor Plan
 - Movable stage included in basketball court and can be stored in the Storage Room when not in use
 - Storage space:
 - Could include chairs for the multi-purpose space



FIRST FLOOR PLAN

- Note: bathroom format is different from the second floor
 - Both bathrooms share the same plumbing, therefore it is more economical
- Current walkway links the new building to the main building 1st floor children’s ministry area
 - 6” wide walkway is an outdoor space
- There is a total of 14 classrooms, 4 offices, and a conference room



CROSS SECTIONS

- Church Building Expansion Budget

Total space of the new building	20,220 sq. ft
Indoor Gymnasium	5,580 sq. ft
New Chapel	6,820 sq. ft
New Classroom/Office	6,820 sq. ft
Connectors	1,000 sq. ft

- **Total Budget for the project: \$3.6 Million**
 - Current Church Building Fund: \$1.2 Mission
 - Total Fund to Raise: \$2.4 Million
- Church Building Pledge Form to be sent out to members
 - **Please pray for this Church Building Expansion Project**
 - To expand God's Kingdom and accommodate our growing ministries
 - Please prayerfully consider giving to this initiative
 - We plan to fundraise for the next two years
- Question and Discussion
 - Question: Will the pledge goal need to be reached before we start the whole CBE project?
 - The goal of the expansion is to meet the needs of our ministry's growth

- We can lengthen the pledge or find another means to allocate funds
- Question: Since we are still in a pandemic, should we assess how the pandemic affected each of the ministries before embarking on this project?
 - We were indeed impacted by the pandemic, especially during the beginning
 - This included the inability to meet in-person and evangelism efforts being hindered
 - Our coworkers spent much time to develop methods to connect online and improve this online experience
 - This past year brought our entire church more closely with coworkers working more in unison. Our coworkers were able to conquer many of these barriers
 - One example: Our tithing has been increasing during this past year instead of decreasing
 - In addition, fellowship numbers have been increasing
 - It seems like we are overcoming these challenges through technological advances and creative efforts to connect with one another
- Question: Why are we not seeing any plans regarding the children's ministry?
 - Pastor Bowman and Tony Ng have been included during the whole CBE planning
 - Once the new building is complete, the first floor of the main building will be used primarily for the Children's ministry
 - In addition, CM will also benefit from the youth having their own dedicated space in the new building
- Question: Have we considered taking advantage of CBE to renovate the main building?
 - Since the main building was built with a steel structure, we would need outside resources (architect) to assess the feasibility of renovating the main building.
- Question: Before asking for a financial pledge, do we need to get approval from the congregations?
 - This plan was voted upon 10 years ago to approve a \$6M budget for building expansion
 - With the first phase completed and the second phase upcoming, we are still within that original approval budget.
- Question: Will we need to wait two years to complete raising funds to start the building expansion process?
 - We are still in the process of designing and seeking the advice of our civil engineer whether we need to increase the size of the retention pond.
 - Once these are resolved, we can begin developing a construction plan and start looking for contractors
 - This will take about a half a year to finalize the plan and hire a contractor to complete the construction
 - It will take about a 1 to 1.5 years to complete construction
- Question: The building usage rate has been very low. With new expansion will decrease it further. Are there more efficient and creative ways to utilize the current facilities to meet the ministry needs with minimum expansion?
 - The current building plan is to meet the ministry needs on Friday, Saturday, and Sunday
 - The utilization efficiency is one of the main points in the design; the additional offices will allow for more ministry to occur during the week
 - In terms of energy efficiency, the new building will be more efficient than the old building
 - Ultimately, the building expansion is to provide more opportunities for ministry expansion
 - For example: MetroWest has utilized their multipurpose space to facilitate sports outreach opportunities to reach seekers.
- Question: Can the multipurpose room/basketball court be used for wedding reception if a wedding ceremony is held in the new Chapel?
 - Our current wedding policy does not include the new building, so that will be reviewed when the

new building is completed.

- Question: Will we deny approval of activities/events that contradict the Bible and our church beliefs?
 - Any event that is hosted at our church has to be aligned to our beliefs. The new building will follow the same guideline.
- Question: How will we complete the fundraising? Will it be primarily through donation or loan?
 - We hope to raise \$2.4 million from our congregation. If we cannot, we will seek a refundable loan from members.
- Question: With the new building expansion, we may need more parking or a shuttle service. Is that being considered in the current CBE plan?
 - The shuttle service will need to be reviewed to increase parking capacity.
 - The new building will serve as a retaining wall which will give us more opportunities.
 - We will also look to our neighbors, like Stride-Rite, for access to additional parking spaces.
- Pastor Pan closed in prayer at 4:38 PM.